

# News on the Nineteenth

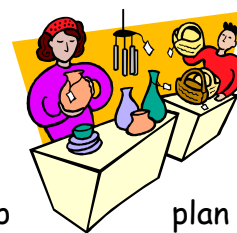
Ponsbourne St Mary's Primary School  
Newgate Street, Nr Herts, Hertfordshire, SG13 8RA  
Tel: 01707 872395 Fax: 01707 872779  
[www.ponsbourne.herts.sch.uk](http://www.ponsbourne.herts.sch.uk)

February 2011



## MAY FAYRE

Your opportunity to be involved in developing our  
Community Cohesion.



This year's May Fayre will be on the 22nd May. We will need volunteers to help for the day, collect supplies, bake cakes, supervise bouncy castle, run stall, set up, etc.

Please offer your support as this is an important fund raiser for the school, church and village, and many hands make light work.

Thank You.

### Payments to School



If you are sending in a payment to school, please put it in the secure post box in the porch. Children 'forget' that they have envelopes in their book bags for the school office and staff do not go through book bags on a daily basis.

The box on the door in the porch is secure and cash payments can safely be placed in here.

Thank you.

### SATS and ASSESSMENT WEEK



The next assessment week for the whole school will be Monday 9<sup>th</sup> May - Friday 14<sup>th</sup> May 2011.

**This is the Y6 national SAT week.**

Please ensure that your children are in school during this week as it is essential that we are able to assess and track their progress. Remember, children perform best when they have had a good night's sleep, a filling breakfast and drinking water for the day.



### EXTREME WEATHER

Please check the school website if there are extreme weather conditions and you are unsure if the school is open at [www.ponsbourne.herts.sch.uk](http://www.ponsbourne.herts.sch.uk) . Information will also be posted at: [www.hertsdirect.org](http://www.hertsdirect.org)

As there are occasions when the school is unoccupied during severe weather and telephone calls are unanswered the best means of contact is via the school email : [admin@ponsbourne.herts.sch.uk](mailto:admin@ponsbourne.herts.sch.uk)

### CONSULTATION EVENING

On Tuesday 22<sup>nd</sup> March it will be Parent Consultation afternoon/evening.

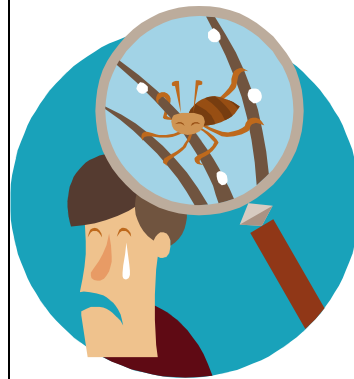
Class lists will be available at children's exit doors from Monday 14<sup>th</sup> March 2011. Please sign up on the lists for an appointment or ring the office if you would like some help.

#### PARENT READERS - KEY STAGE 2

A big THANK YOU to all of our parent readers.  
We are keen to recruit more parent/grandparent helpers especially in KS2 to listen to children read. If you can offer your support please contact the school office.



#### HEADLICE



We have had a report of headlice in school, please check your child's hair regularly.

### National Science Week +

### 10<sup>th</sup> March - 23<sup>rd</sup> March 2011



We have planned many exciting events and activities, with a focus on Science Fiction and Space. The whole week will be about exploring 'other worlds'. On Tuesday 15<sup>th</sup> March Years 1-6 will be spending the day at Olympia for the Doctor Who Experience, on the 10<sup>th</sup> March we have a full size planetarium in the village hall for the day for all classes to visit. A Knex challenge for KS2 is organised for 23<sup>rd</sup> March. Foundation children will have a day visit at a nature park.

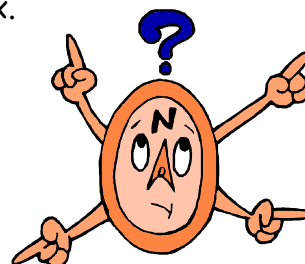
The costs for this week of activities are approx £20 per child and we are requesting a contribution from parents of £10 per child. Please send your payment to the school office - cheques made payable to Ponsbourne St. Mary's.

## KINGSWOOD

Our Year 5/6 pupils had a wonderful time at Kingswood and the staff really enjoyed taking the group.  
Mrs Gaiteri, Mrs Rocca and Mrs Johnson were all very impressed by the bravery and enthusiasm of all the children, who faced and overcome real challenges.  
The weather was kinder to us than in recent years and the sun even made an appearance!  
The children are compiling a presentation of photographs and memories to share with our school community.

## Lost Property

There is a VERY LARGE box of 'lost' property in the front porch.  
If you have lost anything please check here.  
Children should be responsible for their belongings. If items are found around school without a name, they are placed in the lost property box.



## MONDAY MORNING CHURCH ASSEMBLIES

Parents are invited to attend Monday morning assemblies which are held in the Church each week at 8.50am.

After the service, tea, coffee and biscuits are provided by Mrs. Sutcliffe and parents are very welcome to stay and chat with other families and Rev. Pauline.



## Earrings

Reminder: Small stud earrings only should be worn to school.



**This is a Health and Safety requirement!**

## Communion Service

Our next Communion Service will be held in the church on Monday 28<sup>th</sup> March at 9am.  
All families are invited to attend for communion or a blessing.

## The Big Read

Thank you for your support with the Big Read. We have been so impressed by the children's efforts with their reading and their book reviews. Here is an update of achievements to date:

**Bronze Awards** - Ryan Darby, Paige Pryor, Amelia Celimon, Thomas Walk, Alex Owen, Sydney Whan, Toby Owen, Lucy Waddup

**Silver Award** - Mia Fitzgerald, Max Tomlinson, Thomas Walk, Lauren Hatch, George Smith, Demi Millwood

**Gold Award** - Erin Morris, Millie McGreal, Millie Northfield, Madeline Perry, Charlotte Jennings, Lucci Cramer, Gus Northfield, Ashleigh Hastings, Rebecca Clarke, Sophie Maytum

A few children have started all over again .....

The more certificates, the more times your name is put in the draw for cinema tickets!

## RE-ACCREDITATION AS A HEALTHY SCHOOL

Following an audit, we have just been recredited as a Healthy School, which is fantastic news!  
We must keep up good practice and therefore remind parents of the following:

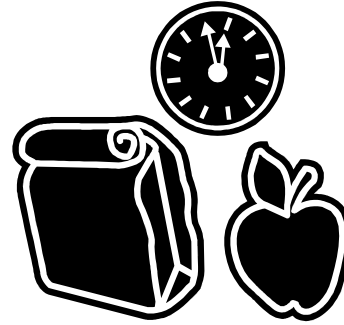
### PACKED LUNCH REQUIREMENTS

School meals are produced under healthy school guidance and packed lunches *must* also fall in line with these guidelines so here is a reminder on how to pack a healthy eating packed lunch.

Food standards for schools are mandatory which means schools must comply legally. **School dinners** must meet these standards and so too must **packed lunches** consumed in school.

Packed lunches should include the following every day:

- Meat, fish or a non-dairy source of protein
- A starchy food
- At least one portion of fruit
- At least one portion of vegetable or salad
- A milk or dairy food
- Soup
- Water or pure fruit juice with less than 5% added sugar



Packed lunches **must not** include:

- Confectionery such as sweets and chocolate bars
- Savoury snacks other than nuts, cheese biscuits, rice cakes and seeds with no added salt, sugar and fat
- Manufactured meat products more often than occasionally

Many of the foods no longer allowed under the food-based standards are associated with a growing range of child health issues including obesity, anaemia, tooth decay and diabetes.

For more information, you can contact the following websites: [www.schoolfoodtrust.org.uk](http://www.schoolfoodtrust.org.uk)  
[www.foodinschools.org](http://www.foodinschools.org) [www.teachernet.gov.uk/wholeschool/healthyliving](http://www.teachernet.gov.uk/wholeschool/healthyliving)

#### Reminder

School starts promptly at 8.50am. Please ensure you arrive in time. If you are late you must report to the school office and sign your child in the late book..

#### Sickness

Should your child be unwell, we would ask that you telephone the school office **BEFORE 10 AM IN THE MORNING**. If you leave a message on the school answer phone please state the reason your child is absent. Unfortunately, 'Unwell' is not recognised by the computer system. Thank you.

#### Water Mains Disruption



We have been contacted by Balfour Beatty who on behalf of Veolia Water are renewing water mains along Cuffley Ridgeway, Carbon Hill and Darnicle Hill. Traffic controls will be in place and disruption is inevitable. We have supplied school holidays dates and they will make every effort to organise their works around these dates. However, this may not be possible. Should school need to be disrupted by loss of water supply during these works, then we will be given 7 days notice and decisions on how to manage disruption will be made at this time.

## BREAKFAST CLUB



Breakfast club is a fun time for children to socialise and share breakfast together, play table tennis, board games, etc..... The cost is: £2 first child, £1 siblings.

The menu is: toast with butter, jam, Bovril, chocolate spread, honey, marmalade or peanut butter.

Cereals, yoghurts, juice, hot chocolate, and tea are available.

We are aiming to run a special themed breakfast club once a month so look out for further details.

All years welcome on a turn up on the day basis.

## Pancake Day Tuesday 8th March.

Breakfast Club Special £2.50 per child or 2 children for £4

Hot Pancakes with a choice of topping, fresh fruit and fresh orange or apple juice or milkshake



lemon and sugar



chocolate spread

fresh orange

Maple Syrup



Jam  
Honey

## Tesco and Sainsbury Vouchers for Schools

**Sainsbury's**  
*Try something new today*

Both Tesco and Sainsburys have launched their vouchers for schools promotions. Please place your vouchers in the boxes in the porch, each one counts. We have been able to order much needed equipment for the school from both of these schemes previously.

**TESCO**

*Every little helps*

## Coming soon !!!!!



An online payments system has been successfully trialled across the County and will be rolled out to schools in the near future.

Meetings for office staff to view the system and then introduce it into school are being organised and we have requested that we are included in the first phase.

This system allows parents to view and pay electronically for dinner money, trips, swimming etc.

A new school website is also being created - watch this space!



## Facebook

8<sup>th</sup> February was 'Internet Safety Day' and children were reminded about the safe use of the www. It appears that many of our children are regularly using Facebook and Twitter and we would like to remind all parents :

- There is **NO** security when using the internet from blackberry phones etc. Do you know what your child is viewing?
- The minimum age for having a 'Facebook' account is 13 - that excludes ALL the children at our school!
- Images posted by children and seen as fun are looked at in a different light by others.

Parents have a responsibility to keep their children safe. Are you doing all that you can do?

## Learning Platform



We have just invested in an online Learning Platform for the school, introduced firstly to the Discoverers.

This enables children to complete tasks set by the teacher, send emails to one another, set up blogs and lots more, in a safe, protected on-line environment.

More details to follow.

## Car Parking



**NOT** to

park in the Pub car park when collecting children at the end of the day. He has very kindly said that the car park can be used by parents in the morning. We would also remind parents not to park in the spaces outside church.

'Bob' from The Crown has been in to see us and has asked us to remind parents park in the Pub car

## Attendance and Holidays in Term Time

Last year our attendance figures showed that we had moved from **satisfactory to outstanding**. This is because parents supported us by not withdrawing their children from their education to go on holiday in term time. Unfortunately this year there have been several families booking holidays in term time.

I fully appreciate that these are difficult financial times but please avoid taking your children out of school for holidays as this gives children the message that school is not important.

## Joint Annual Review Visit

The local authority School Improvement Partner visited the school on Thursday 17<sup>th</sup> February 2011 to evaluate the school's effectiveness.

**We remain an outstanding school in all areas.**

1

## National Foundation for Educational Research

The NFER is recruiting a parent/pupil voice panel to take part in surveys on a wide range of educational issues. There are separate surveys for parents and children. For each household that signs up using our school code the FTS receive £2. The surveys are online surveys and will take no longer than 15 minutes to complete. If you are interested in taking part (and boosting FTS funds) please go to [www.nfer.ac.uk](http://www.nfer.ac.uk) and register using the school code KM664.